

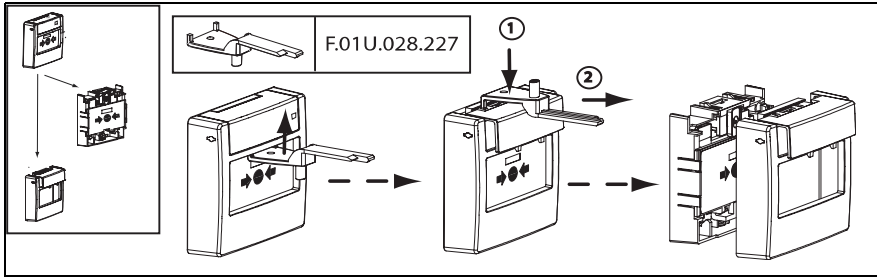


FMC-420RW-GSRRD
FMC-420RW-GSRBU
FMC-420RW-GSRYE

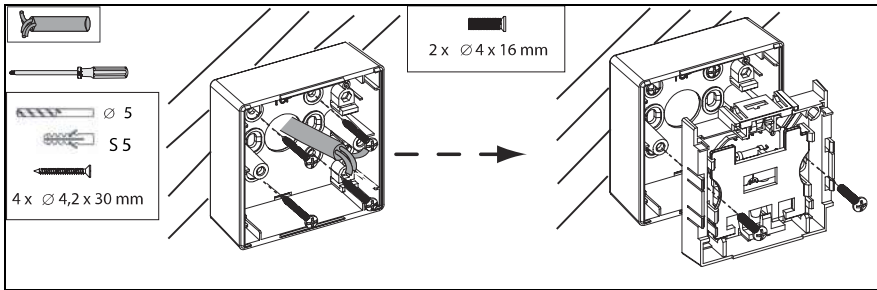


cs	Instalační příručka
da	Installationsvejledning
de	Installationsanleitung
en	Installation Guide
es	Guía de instalación
fr	Manuel d'installation
hr	Upute za instalaciju
hu	Telepítési útmutató
it	Guida di installazione
nl	Installatiehandleiding
pl	Instrukcja instalacyjna
pt	Guia de Instalação
ro	Ghid de instalare
ru	Руководство по установке
sl	Navodila za napeljavo
tr	Kablo Bağlantı Klavuzu

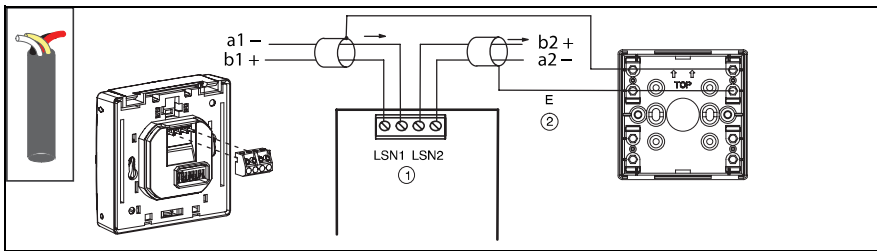
cs	Instalacní příručka	12
da	Installationsvejledning	13
de	Installationsanleitung	14
en	Installation Guide	15
es	Guía de instalación	16
fr	Manuel d'installation	17
hr	Upute za instalaciju	18
hu	Telepítési útmutató	19
it	Guida di installazione	20
nl	Installatiehandleiding	21
pl	Instrukcja instalacyjna	22
pt	Guia de Instalação	23
ro	Ghid de instalare	24
ru	Руководство по установке	25
sl	Navodila za napeljavo	26
tr	Kablo Bağlantı Klavuzu	27



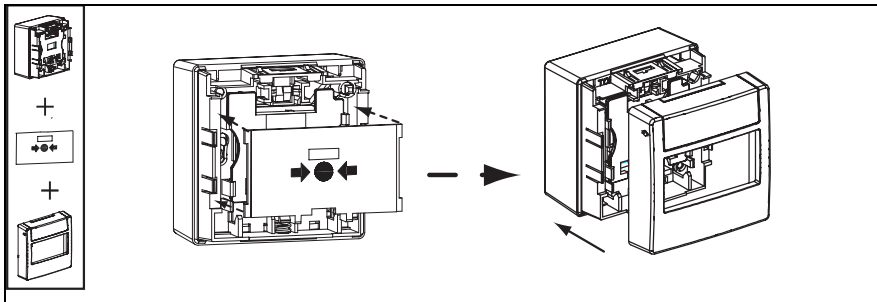
1



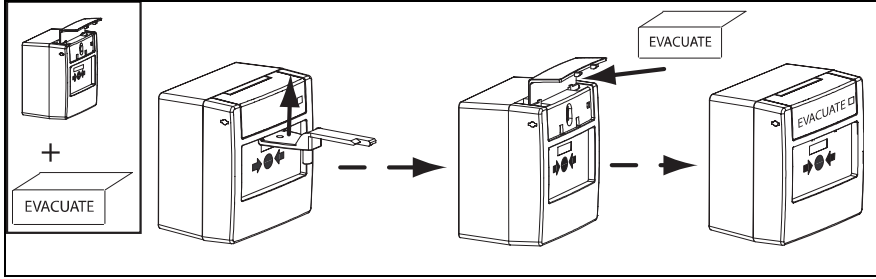
2



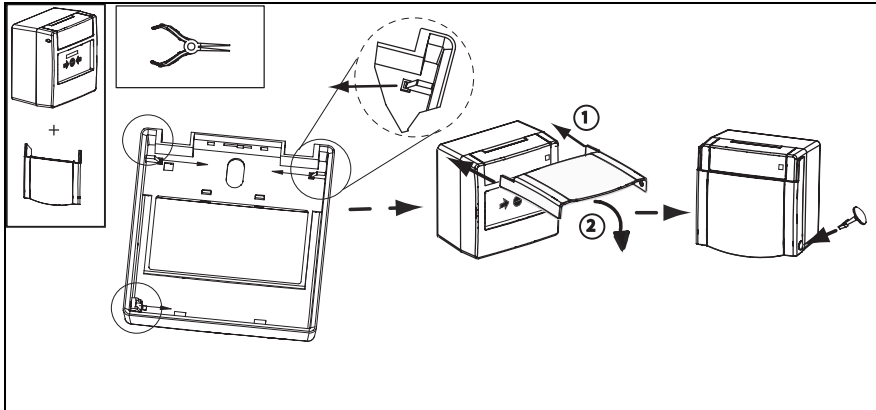
3



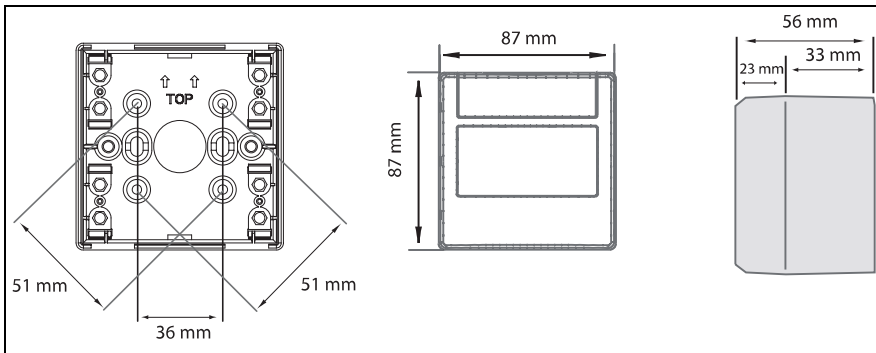
4



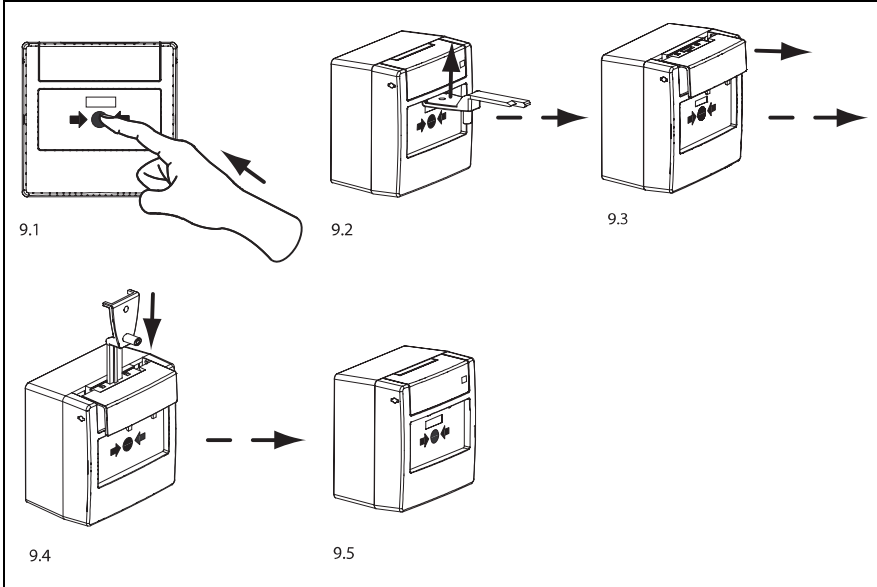
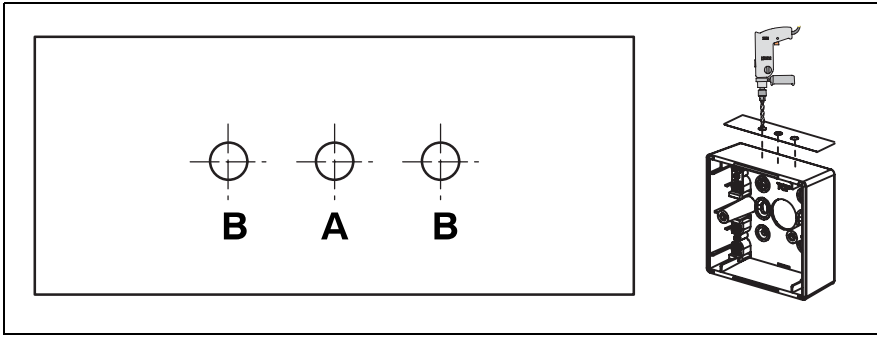
5

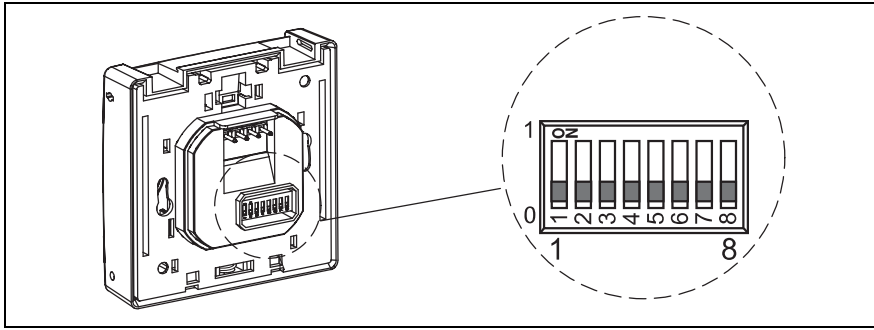


6

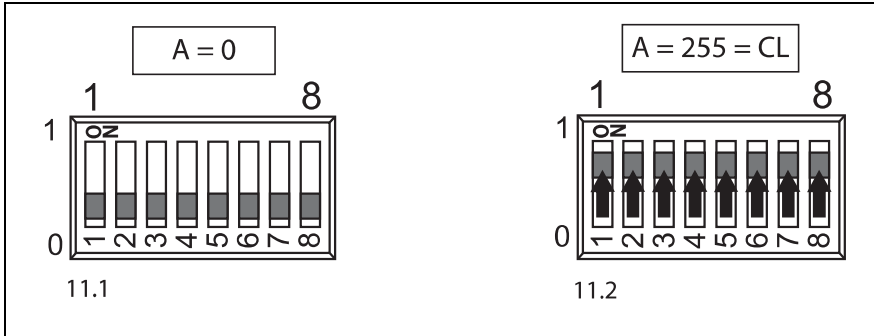


7

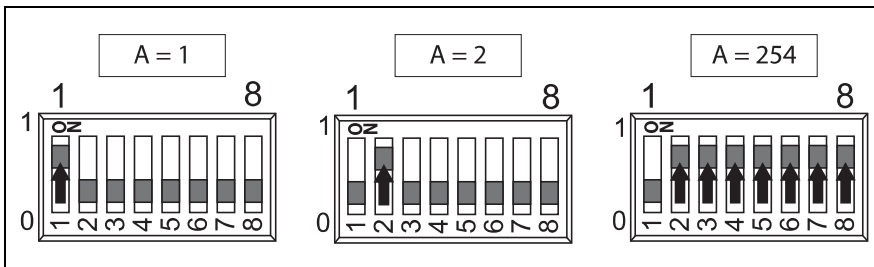




10



11



12

	A	FPA-5000	BZ 500 LSN UEZ 2000 LSN UGM 2020
11.1.	0	X	-
11.2	255 = CL	X	X
12.	1 ... 254	X	-

A	8	7	6	5	4	3	2	1	A	8	7	6	5	4	3	2	1	A	8	7	6	5	4	3	2	1
0	0	0	0	0	0	0	0	0	42	0	0	1	0	1	0	1	0	85	0	1	0	1	0	1	0	1
255=CL	1	1	1	1	1	1	1	1	43	0	0	1	0	1	0	1	1	86	0	1	0	1	0	1	1	0
1	0	0	0	0	0	0	0	0	44	0	0	1	0	1	1	0	0	87	0	1	0	1	0	1	1	1
2	0	0	0	0	0	0	0	1	45	0	0	1	0	1	1	0	1	88	0	1	0	1	1	0	0	0
3	0	0	0	0	0	0	0	1	46	0	0	1	0	1	1	1	0	89	0	1	0	1	1	0	0	1
4	0	0	0	0	0	0	0	1	47	0	0	1	0	1	1	1	1	90	0	1	0	1	1	0	1	0
5	0	0	0	0	0	0	1	0	48	0	0	1	1	0	0	0	0	91	0	1	0	1	1	0	1	1
6	0	0	0	0	0	0	1	1	49	0	0	1	1	0	0	0	1	92	0	1	0	1	1	1	0	0
7	0	0	0	0	0	0	1	1	50	0	0	1	1	0	0	1	0	93	0	1	0	1	1	1	0	1
8	0	0	0	0	0	1	0	0	51	0	0	1	1	0	0	1	1	94	0	1	0	1	1	1	1	0
9	0	0	0	0	0	1	0	0	52	0	0	1	1	0	1	0	0	95	0	1	0	1	1	1	1	1
10	0	0	0	0	0	1	0	1	53	0	0	1	1	0	1	0	1	96	0	1	1	0	0	0	0	0
11	0	0	0	0	0	1	0	1	54	0	0	1	1	0	1	1	0	97	0	1	1	0	0	0	0	1
12	0	0	0	0	0	1	1	0	55	0	0	1	1	0	1	1	1	98	0	1	1	0	0	0	1	0
13	0	0	0	0	0	1	1	0	56	0	0	1	1	1	0	0	0	99	0	1	1	0	0	0	1	1
14	0	0	0	0	0	1	1	1	57	0	0	1	1	1	0	0	1	100	0	1	1	0	0	1	0	0
15	0	0	0	0	0	1	1	1	58	0	0	1	1	1	0	1	0	101	0	1	1	0	0	1	0	1
16	0	0	0	1	0	0	0	0	59	0	0	1	1	1	0	1	1	102	0	1	1	0	0	1	1	0
17	0	0	0	1	0	0	0	1	60	0	0	1	1	1	1	0	0	103	0	1	1	0	0	1	1	1
18	0	0	0	1	0	0	1	0	61	0	0	1	1	1	1	0	1	104	0	1	1	0	1	0	0	0
19	0	0	0	1	0	0	1	1	62	0	0	1	1	1	1	1	0	105	0	1	1	0	1	0	0	1
20	0	0	0	1	0	1	0	0	63	0	0	1	1	1	1	1	1	106	0	1	1	0	1	0	1	0
21	0	0	0	1	0	1	0	1	64	0	1	0	0	0	0	0	0	107	0	1	1	0	1	0	1	1
22	0	0	0	1	0	1	1	0	65	0	1	0	0	0	0	0	1	108	0	1	1	0	1	1	0	0
23	0	0	0	1	0	1	1	1	66	0	1	0	0	0	0	1	0	109	0	1	1	0	1	1	0	1
24	0	0	0	1	1	0	0	0	67	0	1	0	0	0	0	1	1	110	0	1	1	0	1	1	1	0
25	0	0	0	1	1	0	0	1	68	0	1	0	0	0	1	0	0	111	0	1	1	0	1	1	1	1
26	0	0	0	1	1	0	1	0	69	0	1	0	0	0	1	0	1	112	0	1	1	1	0	0	0	0
27	0	0	0	1	1	0	1	1	70	0	1	0	0	0	1	1	0	113	0	1	1	1	0	0	0	1
28	0	0	0	1	1	1	0	0	71	0	1	0	0	0	1	1	1	114	0	1	1	1	0	0	1	0
29	0	0	0	1	1	1	0	1	72	0	1	0	0	1	0	0	0	115	0	1	1	1	0	0	1	1
30	0	0	0	1	1	1	1	1	73	0	1	0	0	1	0	0	1	116	0	1	1	1	0	1	0	0
31	0	0	0	1	1	1	1	1	74	0	1	0	0	1	0	1	0	117	0	1	1	1	0	1	0	1
32	0	0	1	0	0	0	0	0	75	0	1	0	0	1	0	1	1	118	0	1	1	1	0	1	1	0
33	0	0	1	0	0	0	0	1	76	0	1	0	0	1	1	0	0	119	0	1	1	1	0	1	1	1
34	0	0	1	0	0	0	1	0	77	0	1	0	0	1	1	0	1	120	0	1	1	1	1	0	0	0
35	0	0	1	0	0	0	1	1	78	0	1	0	0	1	1	1	0	121	0	1	1	1	1	0	0	1
36	0	0	1	0	0	1	0	0	79	0	1	0	0	1	1	1	1	122	0	1	1	1	1	0	1	0
37	0	0	1	0	0	1	0	1	80	0	1	0	1	0	0	0	0	123	0	1	1	1	1	0	1	1
38	0	0	1	0	0	1	1	0	81	0	1	0	1	0	0	0	1	124	0	1	1	1	1	1	0	0
39	0	0	1	0	0	1	1	1	82	0	1	0	1	0	0	1	0	125	0	1	1	1	1	1	0	1
40	0	0	1	0	1	0	0	0	83	0	1	0	1	0	0	1	1	126	0	1	1	1	1	1	1	0
41	0	0	1	0	1	0	0	1	84	0	1	0	1	0	1	0	0	127	0	1	1	1	1	1	1	1

A	8	7	6	5	4	3	2	1
128	1	0	0	0	0	0	0	0
129	1	0	0	0	0	0	0	1
130	1	0	0	0	0	0	1	0
131	1	0	0	0	0	0	1	1
132	1	0	0	0	0	1	0	0
133	1	0	0	0	0	1	0	1
134	1	0	0	0	0	1	1	0
135	1	0	0	0	0	1	1	1
136	1	0	0	0	1	0	0	0
137	1	0	0	0	1	0	0	1
138	1	0	0	0	1	0	1	0
139	1	0	0	0	1	0	1	1
140	1	0	0	0	1	1	0	0
141	1	0	0	0	1	1	0	1
142	1	0	0	0	1	1	1	0
143	1	0	0	0	1	1	1	1
144	1	0	0	1	0	0	0	0
145	1	0	0	1	0	0	0	1
146	1	0	0	1	0	0	1	0
147	1	0	0	1	0	0	1	1
148	1	0	0	1	0	1	0	0
149	1	0	0	1	0	1	0	1
150	1	0	0	1	0	1	1	0
151	1	0	0	1	0	1	1	1
152	1	0	0	1	1	0	0	0
153	1	0	0	1	1	0	0	1
154	1	0	0	1	1	0	1	0
155	1	0	0	1	1	0	1	1
156	1	0	0	1	1	1	0	0
157	1	0	0	1	1	1	0	1
158	1	0	0	1	1	1	1	0
159	1	0	0	1	1	1	1	1
160	1	0	1	0	0	0	0	0
161	1	0	1	0	0	0	0	1
162	1	0	1	0	0	0	1	0
163	1	0	1	0	0	0	1	1
164	1	0	1	0	0	1	0	0
165	1	0	1	0	0	1	0	1
166	1	0	1	0	0	1	1	0
167	1	0	1	0	0	1	1	1
168	1	0	1	0	1	0	0	0
169	1	0	1	0	1	0	0	1
170	1	0	1	0	1	0	1	0

A	8	7	6	5	4	3	2	1
171	1	0	1	0	1	0	1	1
172	1	0	1	0	1	1	0	0
173	1	0	1	0	1	1	0	1
174	1	0	1	0	1	1	1	0
175	1	0	1	0	1	1	1	1
176	1	0	1	1	0	0	0	0
177	1	0	1	1	0	0	0	1
178	1	0	1	1	0	0	1	0
179	1	0	1	1	0	0	1	1
180	1	0	1	1	0	1	0	0
181	1	0	1	1	0	1	0	1
182	1	0	1	1	0	1	1	0
183	1	0	1	1	0	1	1	1
184	1	0	1	1	1	0	0	0
185	1	0	1	1	1	0	0	1
186	1	0	1	1	1	0	1	0
187	1	0	1	1	1	0	1	1
188	1	0	1	1	1	1	0	0
189	1	0	1	1	1	1	0	1
190	1	0	1	1	1	1	1	0
191	1	0	1	1	1	1	1	1
192	1	1	0	0	0	0	0	0
193	1	1	0	0	0	0	0	1
194	1	1	0	0	0	0	1	0
195	1	1	0	0	0	0	1	1
196	1	1	0	0	0	1	0	0
197	1	1	0	0	0	1	0	1
198	1	1	0	0	0	1	1	0
199	1	1	0	0	0	1	1	1
200	1	1	0	0	1	0	0	0
201	1	1	0	0	1	0	0	1
202	1	1	0	0	1	0	1	0
203	1	1	0	0	1	0	1	1
204	1	1	0	0	1	1	0	0
205	1	1	0	0	1	1	0	1
206	1	1	0	0	1	1	1	0
207	1	1	0	0	1	1	1	1
208	1	1	0	1	0	0	0	0
209	1	1	0	1	0	0	0	1
210	1	1	0	1	0	0	1	0
211	1	1	0	1	0	0	1	1
212	1	1	0	1	0	1	0	0
213	1	1	0	1	0	1	0	1

A	8	7	6	5	4	3	2	1
214	1	1	0	1	0	1	1	0
215	1	1	0	1	0	1	1	1
216	1	1	0	1	1	0	0	0
217	1	1	0	1	1	0	0	1
218	1	1	0	1	1	0	1	0
219	1	1	0	1	1	0	1	1
220	1	1	0	1	1	1	0	0
221	1	1	0	1	1	1	0	1
222	1	1	0	1	1	1	1	0
223	1	1	0	1	1	1	1	1
224	1	1	1	0	0	0	0	0
225	1	1	1	0	0	0	0	1
226	1	1	1	0	0	0	1	0
227	1	1	1	0	0	0	1	1
228	1	1	1	0	0	1	0	0
229	1	1	1	0	0	1	0	1
230	1	1	1	0	0	1	1	0
231	1	1	1	0	0	1	1	1
232	1	1	1	0	1	0	0	0
233	1	1	1	0	1	0	0	1
234	1	1	1	0	1	0	1	0
235	1	1	1	0	1	0	1	1
236	1	1	1	0	1	1	0	0
237	1	1	1	0	1	1	0	1
238	1	1	1	0	1	1	1	0
239	1	1	1	0	1	1	1	1
240	1	1	1	1	0	0	0	0
241	1	1	1	1	0	0	0	1
242	1	1	1	1	0	0	1	0
243	1	1	1	1	0	0	1	1
244	1	1	1	1	0	1	0	0
245	1	1	1	1	0	1	0	1
246	1	1	1	1	0	1	1	0
247	1	1	1	1	0	1	1	1
248	1	1	1	1	1	0	0	0
249	1	1	1	1	1	0	0	1
250	1	1	1	1	1	0	1	0
251	1	1	1	1	1	0	1	1
252	1	1	1	1	1	1	0	0
253	1	1	1	1	1	1	0	1
254	1	1	1	1	1	1	1	0

10

cs

VAROVÁNÍ!



Součásti pod napětím a odizolovaný kabel! Nebezpečí úrazu elektrickým proudem. Systém musí být při připojování bez proudu.

da

ADVARSEL!



Elektriske komponenter og afisoleret kabel! Risiko for elektrisk stød. Strømmen skal være taget fra under arbejde med forbindelsen.

de

WARNUNG!



Stromführende Bauteile und abisolierte Kabel!
Verletzungsgefahr durch Stromschlag. Bei Anschlussarbeiten muss die Anlage stromlos sein.

en

WARNING!



Live components and stripped cable! Risk of injury from electric shock. The system must be current-free during connection work.

es

¡ADVERTENCIA!



¡Componentes cargados y cables desnudos! Riesgo de descargas eléctricas. El sistema debe estar desconectado de la corriente durante el proceso de instalación.

fr

AVERTISSEMENT !



Composants sous tension et câbles dénudés. Risque de blessures dues au choc électrique. Assurez-vous que l'alimentation électrique est coupée lorsque vous effectuez les branchements de l'appareil.

hr

UPOZORENJE!



Komponente pod naponom i neizolirani kabel! Opasnost od tjelesnih povreda zbroj strujnog udara. Sustav ne smije biti pod naponom tijekom radova na montaži.

hu

FIGYELMEZTETÉS!



Feszültség alatti alkatrészek és szigeteletlen kábel!
Áramütésveszély. A rendszernek a csatlakoztatás során kikapcsolt állapotban kell lennie.

it**AVVERTIMENTO!**

Componenti sotto tensione e cavo scoperto. Rischio di scosse elettriche.. Il sistema deve essere spento quando si effettuano i collegamenti.

nl**WAARSCHUWING!**

Spanningvoerende onderdelen en gestripte kabel! Gevaar voor letsel door elektrische schok. Tijdens aansluitwerkzaamheden moet het systeem spanningsloos zijn.

pl**OSTRZEZENIE!**

Elementy pod napięciem i odizolowane kable! Ryzyko porażenia prądem elektrycznym! System musi być odłączony od zasilania w czasie prac instalacyjnych.

pt**AVISO!**

Componentes com corrente e cabo descarnado! Risco de lesões devido a choque eléctrico! O sistema deve estar desligado durante o trabalho de ligação da cablagem.

ro**AVERTISMENT!**

Componente sub tensiune și cablu neizolat! Pericol de electrocutare. Sistemul trebuie oprit în timpul lucrului la conexiuni.

ru**ПРЕДУПРЕЖДЕНИЕ!**

Оголенные провода и компоненты под напряжением! Опасность поражения электрическим током. При подключении систему необходимо обесточить.

sl**OPOZORILO!**

Komponente pod napetostjo in nezaščiten kabel! Nevarnost poškodb zaradi električnega udara. Med priključnimi deli mora biti električni tok sistema izklopljen.

tr**UYARI!**

Elektrik yüklü parçalar ve çıplak kablo! Elektrik çarpması sonucu yaralanma tehlikesi. Bağlantı çalışmaları sırasında sistemin enerjisi kesilmelidir.

Product designation

LSN improved version manual detector for use in interior areas, surface-mounted, resettable:

- FMC-420RW-GSRRD manual call point, red
- FMC-420RW-GSRBU manual call point, blue
- FMC-420RW-GSRYE manual call point, yellow.

Installation

For installation, see Fig. 1- Fig. 8, page 3, 5.

Connection (see Fig. 3, page 4)

Position	Description	Function
1	LSN1: a, b / LSN2: a, b	LSN incoming/LSN outgoing
2	E	Shielding

Address setting

Address setting is carried out using the 8 DIP switches and a suitable pointed object (see Fig. 10 - 12 and the subsequent tables).

- It is not permitted to use different operating modes in one loop/stub/T branch next to each other!

Address (A)	Operating mode
0	Loop/stub in LSN improved version mode with automatic addressing
1 ... 254	Loop/stub/T branches in LSN improved version mode with manual addressing
255 = CL	Loop/stub in LSN classic mode (address range: max. 127)

Functional test

- Press the pane in; see Fig. 9.1.
If an alarm is triggered, the LED is illuminated and the color display in the window changes from white to red.

To reset the manual call point to its starting position:

1. Unlock the maintenance flap with the test key and pull it forward; see Fig. 9.2 and 9.3.
2. Insert the test key into the top opening and push it down; see Fig. 9.4.
The color display in the window changes from red to white.
3. Return the maintenance flap to its starting position.

Technical specifications

LSN operating voltage	15 V DC to 33 V DC
LSN current consumption	0.4 mA
Permissible operating temperature	-25 °C . . +70 °C
Protection class as per EN 60529	IP 54
Dimensions	87 x 87 x 56 mm